

State

The Florida State University Faculty-Staff Bulletin

Volume 46 • Number 11

February 20 - March 11, 2012

CAMPAIGN SUCCESS

Employees come through for United Way, Great Give, **4**

RESEARCH PROGRESS

Two professors receive NEH fellowships, **6**

MARKETPLACE EXPRESS

Seven researchers win GAP awards for commercialization, **7**

New dean appointed at FAMU-FSU College of Engineering



Yaw D. Yeboah

By Jeffery Seay
EDITOR IN CHIEF

Professor **Yaw D. Yeboah** of Pennsylvania State University was named the new dean of the Florida A&M University-Florida State University College of Engineering on Jan. 30. The appointment will take effect July 1.

“Dr. Yeboah is an accomplished scholar who blends a genuine concern for students with the leadership skills that will propel the College of Engi-

neering toward greater distinction,” said **Garnett S. Stokes**, Florida State’s provost and executive vice president for Academic Affairs. “He is a consensus-builder with a track record of success in higher-education administration.”

Yeboah will be the fifth leader of the jointly operated engineering college, which enrolls approximately 2,250 undergraduate and 300 graduate students annually. After a national,

Please see **YEBOAH, 6**

‘Florida State 24/7’ University launches official news Web page

Florida State University launched Phase One of a comprehensive, interactive news site earlier this month, **Florida State 24/7**. The site, which replaces **fsu.com**, offers a greater variety of current news, as well as video and social media engagement tools such as the latest Twitter and Facebook feeds about the university. The site also tracks the university in major news media and offers a calendar.

The site, which also makes it easier to share stories and videos — as well as offer comment — is a milestone in the

Please see **FLORIDA STATE 24/7, 5**



Spread THE Word

Florida State University is participating in Recycle Mania, a national, 10-week recycling competition to promote waste reduction on college campuses. Schools report recycling and trash data, and then are ranked according to volume of recyclables. Florida State employees can join the effort by recycling every kind of paper and cardboard, as well as glass, plastic and aluminum cans and bottles. Recycling bins and stations are located across campus and in most departments.

Are you making any one of these **7 mistakes?**

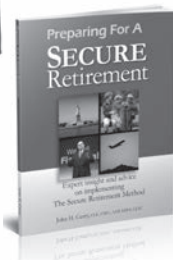
A personal note from John Curry...

Both my father and grandfather were members of the Florida Retirement System. When it came time for them to retire they were not well versed in the options available. Looking back they both could have made better choices.

When I look over at my grandson playing in the yard I realize that my advocacy role is important not just to those examining their retirement options but to future generations as well. Asset protection, long term care and income planning are important to our family and life.

I often ask people "Do you feel like you have the knowledge you need as you move toward retirement?". The intricacies of DROP, deferred compensation and FRS pension options can be mind numbing.

Let me help.



Go to:
www.JohnHCurry.com/7mistakes
to sign up for your FREE report that contains more expert advice on avoiding the Seven Common Planning Mistakes.

It's been said that every 10 seconds, a Baby Boomer turns age 60.

This started in January 2006. I don't know if it's every 10 seconds, 20 seconds, or 30 seconds. The point is that Baby Boomers are turning age 60 and will for the next 18 years. This will have tremendous consequences for all of us.

Most people will not be prepared for retirement.

Why?

I think it's because of the following **7 mistakes**:

- Underestimating Life Expectancy
- Paying Too Much in Taxes
- Ignoring Inflation, The Silent Thief
- Relying Too Heavily on Government and Employer Retirement Plans
- Not Planning for Health Care and Long Term Care Services
- Not Saving Enough Money on a Personal Basis
- Focusing on Financial Products Instead of Strategic Planning

Well, there you have it: The **7 Mistakes** that will impact everyone in planning for their retirement. I hope that you will study these issues and I wish you much success and financial freedom.

FREE Report available!! Learn how to plan for and avoid these **7 Mistakes** and Prepare for a Secure Retirement.

Call Toll Free 1-800-398-4565 x 7111,
24 hours a day for a Recorded Message, or go to
www.JohnHCurry.com/7mistakes to download the report.

www.JohnHCurry.com Ph: 850-562-3000 Fax 850-562-2921

"In the years I've known John, I have never seen his insights, strategies and process be as focused as they are in this book. His thoughts, comments and philosophy are timely."

Donald J. Faughnan

Faughnan Financial Network, Inc. New York, NY

John H. Curry, CLU, ChFC, AEP, MSFS, CLTC: Registered Representative and Financial Advisor of Park Avenue Securities, LLC (PAS) 3664 Coolidge Court, Tallahassee, FL 32311. Securities products/services and advisory services are offered through PAS, a registered broker-dealer and investment advisor. 1.850.562.9075. Financial Representative, The Guardian Life Insurance Company of America (Guardian), New York, NY. PAS is an indirect, wholly owned subsidiary of Guardian. North Florida Financial Corporation is not an affiliate or subsidiary of PAS or Guardian. Neither Park Avenue Securities, Guardian, nor their representatives render legal or tax advice. Please consult with your attorney, accountant, and/or tax advisor for advice concerning your particular circumstances. PAS is a member FINRA, SIPC.

State

Vol. 46 • No. 11
unicomm.fsu.edu/State-Faculty-Staff-Bulletin

Editor in Chief
Jeffery Seay

Writers
Elizabeth Bettendorf
Libby Fairhurst
Barry Ray
Andrea Wolf

Interim Director of
News and Research Communications
Jill Elish

Assistant Vice President for
University Relations and Director of
Integrated Marketing and
Communications
Jeanette DeDiemar, Ph.D.

Vice President for
University Relations
Liz Maryanski

President
Florida State University
Eric J. Barron, Ph.D.

Board of Trustees
Chairman
William "Andy" Haggard
Vice Chairman
Susie Busch-Transou

Aviram "Avi" Assidon
Allan G. Bense
Edward E. Burr
Joseph Camps, M.D.
Emily Fleming Duda
Joseph R. Gruters
Mark Hillis
James E. Kinsey Jr.
Sandra Lewis, Ph.D.
Margaret "Peggy" Rolando
Brent W. Sembler

The deadline for the
March 12 - April 1, 2012, issue is
4:30 p.m., WEDNESDAY, FEB 29.



State is the faculty-staff bulletin and document of record of Florida State University. It is published 16 times annually by University Communications — every three weeks during the fall and spring semesters, and monthly during the summer.

Submissions: jseay@admin.fsu.edu.

Advertising is handled by the Florida State University Communications Group. For rates, call Crystal Cumbo at (850) 487-3170, Ext. 352.

People with disabilities who require special accommodation for any event listed in *State* should call the unit sponsoring the event, or for the hearing or speech impaired, use the Florida Relay Service at 1-800-955-8770 (voice) or 1-800-955-8771 (TDD). Requests for accommodations must be received at least five working days before the event. To receive *State* in an alternative format, call the FSU Student Disability Resource Center at (850) 644-9566.

State is underwritten in part by proceeds from the Florida State University license plate.



www.fsu.edu/tag

Council on Research and Creativity Faculty receive Multidisciplinary Support Program award

The university's Council on Research and Creativity has selected the following faculty members to receive a 2011-2012 MultiDisciplinary Support Program award in the amount of \$25,000:

•**Amy Ai** (Social Work), with **Roy Baumeister** (Psychology), **Frank Fincham** (Family and Child Sciences), **Eric Garland** (Social Work), **Ricardo Gonzalez-Rothi** (Medicine), **Mohamed Kabbaj** (Psychology) and **Daniel McGee** (Statistics), "Exploration of a New Model of Psychological and Biophysical Mechanisms Underlying the Role of Mindfulness in Hypertension"

For information on all programs of the Council on Research and Creativity, visit www.research.fsu.edu/crc/crc.html.



Amy Ai

FSU Photography Services/Michele Edmunds

hello!

Alfreddie Holliday

Job title: Custodial Supervisor

To-do list: Supervises 13 employees

from 5 a.m. to 1:30 p.m. in seven buildings: Westcott, Kellogg, Eppes, Turnbull Conference Center, Marriage and Family Center, the Westcott Welcome Center, and the building formerly known as the First District Court of Appeal, which now belongs to the College of Law.

How 'bout them: Rattlers, Seminoles, Pittsburgh Steelers — and the Los Angeles Lakers during the glory days of Kareem Abdul-Jabbar and Earvin "Magic" Johnson.

Number of years at FSU: 23

Is a great boss: A few years ago, started an annual tradition of treating his staff to a luncheon to thank them for a job well done. What's more, he enjoys a good professional relationship with his supervisor, Catherine Johnson.

On Sunday: Attends Macedonia Primitive Baptist Church, where he is training to be a deacon and serves as assistant treasurer.

Quotable: "You have to love people to do this job. I don't do it for the money. I do because I enjoy the job. Every day brings a new challenge."

'We did it!'

Employees surpass goals in two philanthropic campaigns

By **Jeffery Seay**
EDITOR IN CHIEF

The people of Florida State University "go big" when it matters. Sure, they are known for giving directions with a friendly smile to a lost parent or new student. But when it comes to worthy causes such as the **United Way** or **The Great Give**, they also are known for putting philanthropic dollars behind all those friendly smiles.

United Way Employees Campaign

Faculty and staff members donated \$397,240 to the university's 2011 United Way Employees Campaign, exceeding the campaign's the \$390,000 goal by 7,240.

Dennis Bailey, associate vice president for facilities administrative services, and **Jeanine Ward-Roof**, dean of students, served as the campaign's co-captains. Both praised the university's administrators, staff and faculty for making the campaign a success.

"We did it! Despite the economic challenges our community is faced with, we were able to work together to exceed the goal," Ward-Roof said.

Ward-Roof was gratified to learn about the successes of the United Way and how members of the Florida State campus and greater Tallahassee community are assisted by the generosity of co-workers, neighbors, friends and strangers who give of their personal resources.

"Thank you to everyone who took the time to serve in a campaign leadership

role, plan an event for their colleagues, raise awareness or give any amount of money," Ward-Roof said. "Together we truly did realize the mission of the United Way — to coordinate the caring power of communities to make a difference in people's lives."

Bailey echoed Ward-Roof's sentiments of appreciation.

"I already knew of the compassionate and caring nature of the Florida State family, and this experience presented yet another opportunity for me to validate that fact," Bailey said. "Wherever I went and with whomever I spoke on behalf of the United Way, I was greeted with an empathetic and sincere appreciation of the plight of those less fortunate. It was a rewarding and enriching experience to be part of this year's campaign."

The Great Give

Faculty, staff and students — as well as alumni and friends — certainly stayed in character during The Great Give by donating \$193,838.10 during 36 hours on Jan. 23-24. The total exceeded the goal by nearly \$33,000 or 17 percent.

"On behalf of Florida State University and the FSU Foundation, we want to thank everyone who elected to support the university during The Great Give," said **Andy A. Jhanji**, executive vice president of the Florida

State University Foundation. "We are excited with the results from our first-ever online campaign."

"The Great Give involved the entire campus and community in supporting FSU in a fun and exciting way," said **Chad Warren**, director of annual giving for the FSU Foundation.

All of the university's colleges, programs and funds that support academic and athletic excellence stand to benefit from the campaign, which was a collaboration between the FSU Foundation, Seminole Boosters, the Florida State University Alumni Association and the John and Mable Ringling Museum of Art.

"I donated to The Great Give for several reasons. First and foremost, I support Florida State," said **Janis Schmauch**, an administrative assistant in the Department of Biological Science. "The online donation site using credit/debit cards made it quick and convenient. No check writing. No pledging and getting a bill. And I received instant acknowledgement of my donation. I donated twice, once to the Department of Biological Science and once to an endowed scholarship. What a great idea!"

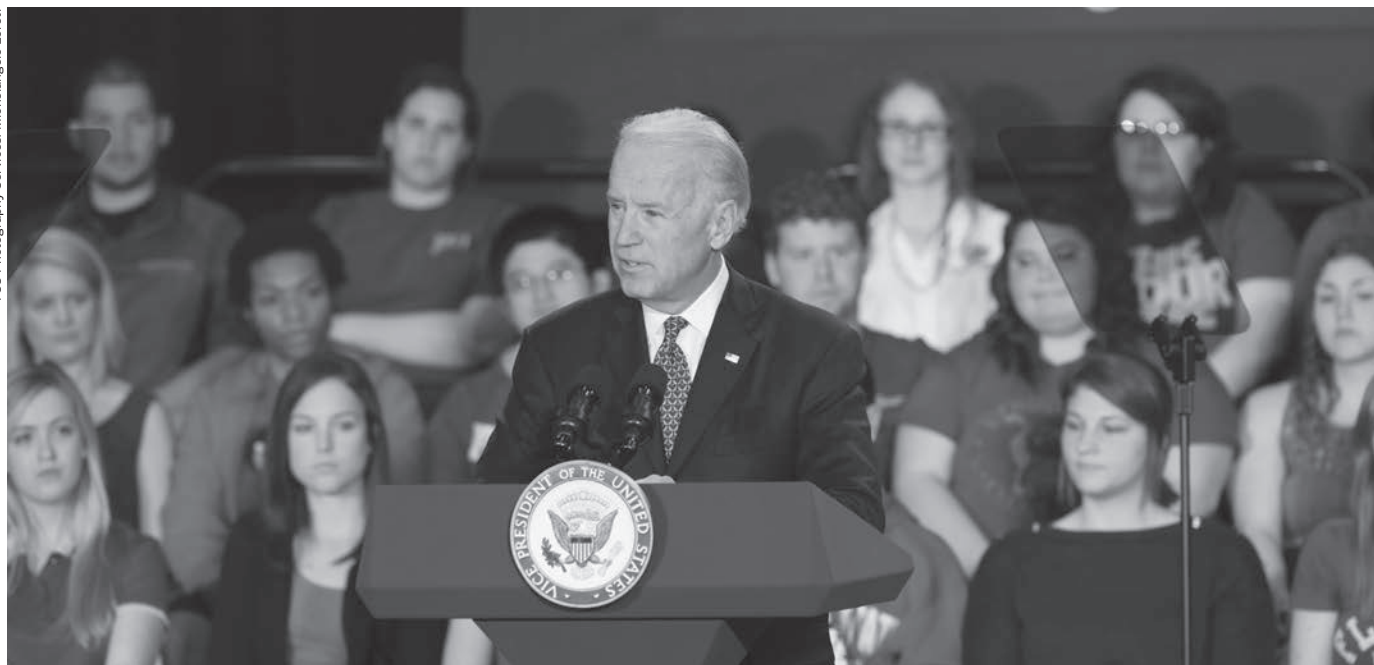
The date and target amount of the campaign were chosen in honor of the 161st anniversary of the Jan. 24, 1851, signing of the charter to create the academic institution that would become Florida State University.



NewsMakers

"At least a part of the interpersonal dynamic that exists when men and women are getting to know prospective romantic partners is being governed by the biology of a woman's body and men's sensitivity to these biological factors."

— **Michael Kaschak**, a Florida State University associate professor of psychology, as quoted Feb. 8 on the CNN Health page at **CNN.com**. Kaschak was discussing his new study that suggests young men change their speech patterns — usually subconsciously — when they interact with a woman who is in the fertile period of her menstrual cycle. The changes are a reaction to subtle differences in a woman's skin tone, voice and scent.



Vice President Joe Biden made a visit to campus Feb. 6 to discuss the importance of preserving access and affordability in higher education. Speaking to nearly 1,000 students, faculty and staff members at the Florida State Basketball Training Facility, Biden suggested doubling the number of federal college work-study jobs and helping graduates repay their student loans in a more sensible way. His appearance was the third time in recent history that a sitting vice president made an official visit to campus. Dick Cheney served as the speaker during Florida State's spring commencement in 2004, and Al Gore spoke during the dedication ceremony of the National High Magnetic Field Laboratory in 1994.

FLORIDA STATE 24/7

from page 1

AUTO LOANS
as low as
2.49%
Fixed APR

Let Us Help You Pay Less

Refinance your auto with us and save! We saved members over \$100,000 in just three months.

224-4960 | www.fsucu.org

Federally Insured by NCUA.

FSU
Credit Union

Play
LOAN
LOTTERY
for a chance
to lower
your auto
loan rate
by 3%!

Loan Lottery
expires 3/31/12 at
which time we
will beat your rate
by 2% APR.

APR= Annual Percentage Rate. 2.49% APR is our best rate for terms up to and including 36 months and 3.25% APR is our best rate for terms between 36 and 72 months on new and used consumer auto, truck and motorcycle loans. You must qualify for membership at Florida State University Credit Union (proudly serving FSU fans, family and friends) and you must be approved for the loan to be eligible. Your vehicle is subject to inspection. Credit history and delinquency may affect your eligibility. Promotion is not valid for existing Florida State University Credit Union loans or indirect loans. Normal credit standards apply. Promotion is valid starting February 1, 2012 until we fund \$2 million at this rate or June 30, 2012, whichever comes first. FSU Credit Union reserves the right to cancel these promotions at any time without notice. Contact a representative at 877-GO-FSUCU (877-463-7828) for complete details and official rules.

university's integrated marketing and communications effort to enhance the way news and information is distributed, said **Jeanette DeDiemar**, assistant vice president for University Relations.

The project team, led by University Communications news editor **Barry Ray**, researched innovative university and popular-culture news sites, and technology trends, before developing the prototype.

"Feedback from potential users was integral to the development process," said DeDiemar, which included external and internal audiences as well as the media.

The news site, managed by Ray, will continue to be enhanced during the next year.

"We are especially interested in feedback as well as story and content ideas," Ray said.

Email story ideas and feedback to news-office@unicomm.fsu.edu.

"Feedback from potential users was integral to the development process."

— Jeanette DeDiemar
ASSISTANT VICE PRESIDENT
FOR UNIVERSITY RELATIONS

Spiller and Clarke win prestigious NEH fellowships

By Elizabeth Bettendorf
NEWS AND RESEARCH COMMUNICATIONS

English Professor **Elizabeth Spiller** is intrigued by life during the Renaissance. Her research has led her to better understand what people read, cooked — even how they set up house.

Spiller has examined topics as divergent as reading and race during the period, written two award-winning books on the topics and edited a couple of 17th-century English recipe books.

For her efforts, she was recently awarded a **National Endowment for the Humanities** (NEH) fellowship to pursue research on her most recent book: “The Sense of Matter: Science, Aesthetics and Literary Creation in the Renaissance.” The project will offer new answers as to why literature “mattered” in thinking about the physical boundaries of the world and our experiences of it, Spiller said.

The \$50,400 award — her second in five years — will allow Spiller to travel and dig through libraries at Yale and in England, as well as provide precious time to read and write.

For her part, Spiller said she is incredibly grateful to the NEH, which she calls a “truly trickle-down organization” because it funds so many projects



Elizabeth Spiller



Randolph Clarke

from oral histories collections in small-town libraries to reading projects aimed at middle school students.

“I think as a culture to know who you are and where you are going to go is very important,” Spiller said. “The NEH gift is ongoing in the sense that it allows us to continue to explore our cultural history.”

The NEH also awarded an identical fellowship to philosophy Professor **Randolph Clarke**, who studies free will and human agency. Human agency is the expression of our capacity to make choices and carry them out.

“It’s very exciting, and a pleasant surprise, to receive the fellowship,” Clarke said. “I’ve been working on a project that I’ll now be able to complete during the year covered by the award.”

The NEH grant was awarded for

Clarke’s most recent project: He’s writing a book about an important aspect of human agency that has received relatively little attention.

“Theories of agency — whether in philosophy, law or psychology — generally focus on actions, on things such as firing a gun or telling a lie,” Clarke said. “Of course our actions are important; they have consequences, and we’re generally responsible for them. But we also sometimes omit to act or refrain from doing a certain thing. On such occasions, not acting, too, can have important consequences, and we can be responsible for not doing something we ought to have done.”

Clarke offers this example: Suppose that an adult is charged with several acts of child abuse. Others have witnessed the abuse or been told about it but failed to intervene or notify the police. The failures to act have had bad consequences, allowing the abuse to continue. The individuals would seem to be blameworthy for not taking action, and some of them might be legally culpable.

His work will focus on similarities and differences between actions and omissions of this sort. And, Clarke added, “how we’re to understand responsibility for not acting in such cases.”

YEBOAH

from
page **1**

five-month search, Yeboah was selected to succeed **Ching-Jen “Marty” Chen**, the college’s dean from 1992 to 2011. Engineering Professor **John R. Collier** has served as interim dean since Chen stepped down in February 2011.

“I look forward to joining the FAMU-FSU College of Engineering family, and to continuing the tradition of excellence by upholding the motto ‘Quality, Growth and Diversity,’” Yeboah said. “The potential of the college, through its uniqueness, advantages and the opportunities it offers, is incredible, and I anticipate us working together on a shared vision to move it to the next

level.”

Yeboah began his distinguished career in industry conducting research and development at the General Electric Corporate Research and Development Center in Schenectady, N.Y. He then joined Clark Atlanta University, building an engineering program as associate dean for science and engineering. In addition, he served as technical director of the Research Center for Science and Technology at Clark Atlanta University from 1995 to 2004.

At Penn State, Yeboah was the department head of the John and Willie Leone Family Department of Energy and Mineral Engineering, where he administered the engineering degree programs in energy, environmental

systems, mining, and petroleum and natural gas. He also continued his research in catalysis, bioenergy, fuel cells and combustion, and emission control.

In 2008, Yeboah received the Black Achiever in Chemical Engineering Award for extraordinary contributions to chemical engineering and the engineering profession from the American Institute of Chemical Engineers.

In 1975, Yeboah was the first Massachusetts Institute of Technology student to ever earn four degrees in four years — bachelor’s degrees in management, chemistry and chemical engineering, and a master’s degree in chemical engineering practice. He earned a doctorate in chemical engineering in 1979, also from MIT.

Seven researchers receive fall 2011 'GAP' awards

The Florida State University Research Foundation recently selected five faculty projects to receive **GAP** or "Grants for Application Proof of Concept" awards for fall 2011.

GAP awards are designed to support Florida State researchers as they seek to move technology out of the laboratory and into the commercial marketplace. The awards are given to researchers who most clearly can identify the commercial viability of a product, process or license that will come from their efforts with a corporate partner.

The faculty researchers, projects and grant totals include:

•**Michael Blaber** (Biomedical Science) and **Joseph Schlenoff** (Chemistry and Biochemistry), "Accelerated Wound Healing." The project will develop and evaluate improved method for treating wounds using novel materials and a breakthrough therapeutic healing technology. (\$50,000)



Sean Barton



Michael Blaber



Steven Lenhart



Kenneth Roux



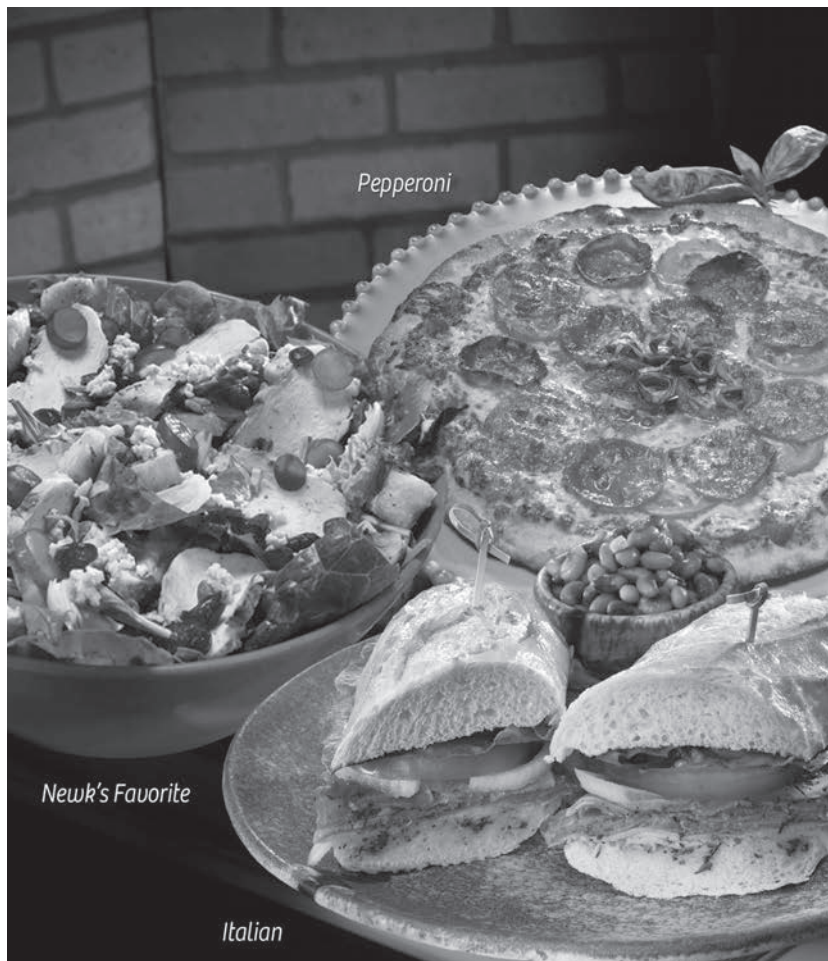
Joseph Schlenoff

•**Steven Lenhart** (Biological Science), "High-Throughput Drug Screening Array." The project will develop and evaluate a microarray platform capable of screening drug libraries at a fraction of the cost of the current state of the art. (\$15,000)

•**Juan Ordonez** (Mechanical Engineering) and **Sean Barton** (Physics), "Inflatable Vacuum Chamber." To project will design and build a system of lightweight vacuum chambers that could have applications for aerospace, medical devices and energy. (\$6,850)

•**Kenneth Roux** (Biological Science), "Production of Monoclonal Antibodies and Kits." The project will develop and scale up test kits that are used to detect specific types of nut allergens to avoid nut allergy outbreaks. (\$25,000)

•**Jacob VanLandingham** (Biomedical Science), "Novel Treatment for Traumatic Brain Injuries." The project will develop and test a new drug treatment for sports-related concussions and blast-related injuries in the military. (\$35,000)



Supremely satisfying signature dishes made fresh for you.

Ready for toasted, tasty sandwiches?
Crispy, California-style pizzas?
Mixed-green salads layered with taste
bud tantalizing goodness? Savory,
made-from-scratch soups? Oh-so-decadent
desserts? Then you're ready for Newk's.

**1400 Village Square Blvd.
850-329-7162**

NEWK'S®
www.newks.com

RECOGNITIONS

Bahram Arjmandi, Ph.D. (Human Sciences), will receive the Dr. Edward J. Masoro Distinguished Alumnus Award from the University of Texas Health Science Center at San Antonio, March. The award recognizes former graduate students or post-doctoral fellows who have made major academic accomplishments in the study of aging.



Bahram Arjmandi

Penny Ralston, Ph.D. (Human Sciences), received the Board on Human Sciences 2011 Lifetime Achievement Award, November. She was honored as a national leader who has a significant history of promoting and advancing the human sciences in higher education.

Michael Shatruk, Ph.D. (Chemistry and Biochemistry), will receive the American Chemical Society's 2012 ExxonMobil Award in Solid State Chemistry during the fall 2012 national meeting of the American Chemical Society,



Michael Shatruk

Philadelphia.

Bruce A. Thyer, Ph.D. (Social Work), has been selected as a distinguished scholar and fellow of the National Academies of Practice. Thyer will be recognized and receive a National Academies of Practice medallion and certificate at the organization's New Member Induction Banquet, held in conjunction with its Annual Forum, March 23-24, Arlington, Va. Thyer's practice-research interests include program evaluation, applied behavior analysis, and clinical social work. He has published more than 30 books, including "Program Evaluation: An Introduction" (2010, Cengage), "Cultural Diversity and Social Work Practice" (2010, Thomas Publishers) and "Quasi-Experimental Research Designs" (2012, Oxford University Press).

Bill Wertman, M.S.W. (Social Work), was featured in a listing of "10 Dedicated and Deserving Social Workers," a group of exemplary social workers nominated by their peers for their accomplishments and commitment to the profession, in the journal *Social Work Today*, Vol. 12, No. 1, January-February 2012. Wertman earned his Master of Social Work degree from Florida State in 2005.

BYLINES

Neil Abell, Ph.D.

(Social Work), co-wrote an article, "Measuring Stigma Among Health Care and Social Service Providers: The HIV/AIDS Provider Stigma Inventory," with S.E. Rutledge, J. Whyte, K. Brown and N. Cesnales," published in the journal *AIDS Patient Care and STDs*, Vol. 25, No. 11, October 2011.

Myra Hurt, Ph.D. (Medicine), co-wrote a paper, "Phosphorylation of the Transcription Factor YY1 by CK2 α Prevents Cleavage by Capase 7 during Apoptosis," with Sarah Riman, Raed Rizkallah, Ari Kassardjian, Karen E. Alexander and Bernhard Lüscher, published in the journal *Molecular and Cellular Biology*.

Mohamed Kabbaj, Ph.D. (Medicine), co-wrote a paper "Extracellular Signal-Regulated Kinase 2 Signaling in the Hippocampal Dentate Gyrus Mediates the Antidepressant Effects of Testosterone," with graduate student Nicole Carrier, to be published in the journal *Biological Psychiatry*, April. One of the paper's illustrations will be featured on the journal's cover. Kabbaj also co-wrote another paper, "Juvenile and Adult Rats Differ in Cocaine Reward and Expression of Zif268 in the Forebrain," with Nicole Carrier, David Dietz, F. Hollis and M. Gaval-Cruz, to appear in an upcoming issue of the journal *Neuroscience*. Kabbaj will make a presentation on new ways of classifying mental disorders based on

dimensions of observable behavior and neurobiological measures during the NIMH Research Domain Criteria Project (RDoC) workshop, Washington, D.C., Feb. 27-28. Kabbaj will serve as a reviewer during the F02a Behavioral Neuroscience Fellowship study section, Washington, D.C., March 12-13.

Stephen Tripodi, Ph.D. (Social Work), co-wrote an article, "Concept Mapping: An Approach for Evaluating a Public Alternative School Program," with Cal L. Streeter, Cynthia Franklin and Johnny S. Kim, published in the journal *Children and Schools*, Vol. 33, No. 4, October 2011.

Yanchang Wang, Ph.D. (Medicine; Biomedical Sciences), co-wrote a paper, "Loss of Function of the Cik1/Kar3 Motor Complex Results in Chromosomes with Syntelic Attachment that are Senses by the Tension Checkpoint," published in the journal *PLoS Genetics*.

PRESENTATIONS

Katrina J. Boone, M.S.W., and **Sharon Ross-Donaldson**, M.B.A., M.S.W. (Social Work), made a presentation, "Crossing the Line: Boundaries for Professionals," at the 2011 Social Work Practice Conference, St. Croix and St. Thomas, Virgin Islands, November 2011.

Lilian Garcia-Roig (Art) recently opened her ninth solo show, "Lilian Garcia-Roig: Solid Fluidity," at Valley House Gallery in Dallas. She also gave an artist's talk before the opening. The show ran through Feb. 18. Garcia-Roig also is part of a two-person show, "From Nature," which opened Feb. 17 and runs

through March at Thomas Deans Fine Art, Atlanta. On March 7, Garcia-Roig will give a presentation for the "Encounters with Artists" lecture series at Thomas Deans Fine Art. And on March 8, she will be at the opening reception of a four-person exhibition, "Trees," curated by Marianne Lambert, at the Swan Coach House Gallery, also in Atlanta.



Lilian Garcia-Roig

Iskandaria Masduki, M.S. (Center for Information Management and Educational Services), made a poster presentation, "How to Convert Linear to Branching Simulation: FDOT Case Study," at the Immersive Learning Conference and Symposium, Jan. 18-20, New Orleans. The presentation depicted a conceptual framework of how a linear simulation can be converted to a branching simulation.

GRANTS

Bradley E. Cox, Ph.D. (Education), has received a \$153,323 grant from the TG Public Benefit Grants Program to study "Linking Institutional Policies to Student Success." The co-principal investigator is Robert Reason of Iowa State University; T.K. Wetherell, Ph.D. (Education), will serve as the project's data coordinator for the state of Florida; Barbara Tobolowsky of the University of Texas at

Arlington will serve as the project's data coordinator for the state of Texas.

Eyitayo Onifade, Ph.D. (Social Work), has received a \$60,000 grant from the Home Builders Institute to support an industry-sponsored mentoring program for youth with promise and untapped abilities. The FSU Construction-Coaching Opportunities to Reach Employment (C-CORE) program, in partnership



Eyitayo Onifade

with 21st Century Research and Evaluation, will deliver mentoring services to approximately 200 youths

during a 14-month period.

SERVICE

Pam Graham, M.S.W. (Social Work), has been reinstated to serve on the state of Florida's Child Abuse Death Review Committee, an 18-member multidisciplinary group that consists of seven agency appointees and 11 members appointed by the state surgeon general. Her term of service is December 2011 to December 2013.



A river runs through it: *State's* black-and-white format does not do justice to Lilian Garcia-Roig's colorful "**Water & Rock Flows**," a 48" x 48" depiction of the Skykomish River in Washington. The work was featured on the cover of the 24-page exhibition catalog for "Lilian Garcia-Roig: Solid Fluidity." (See Garcia-Roig's "Campus in Action" item on page 8.)



Florida State unveils its first CNG car: During a Jan. 30 ceremony, the Office of Research unveiled the latest addition to the university's vehicle fleet — a Honda Civic sedan that runs on compressed natural gas (CNG) instead of gasoline. Office of Research employees who drive the CNG car will keep logs of fuel mileage for comparison with the university's gasoline-powered vehicles. Natural gas is cheaper and cleaner than gasoline. CNG cars typically run 180 to 200 miles before needing a fill-up. In attendance at the unveiling ceremony were **Kirby Kemper**, vice president for Research; **Jackie Pons**, Leon County superintendent of schools; **Martin Proctor**, vice president of Tallahassee's Proctor Dealerships; **W. Theo Proctor III**, vice president of the Proctor Dealerships; **Barbara Brentano**, a consultant with American Honda; and **Daryl Green**, director of marketing for the Proctor Dealerships. University Communications' Department of Creative Services created the design for the car wrap.

The Source

News from Human Resources

TRAINING AND ORGANIZATIONAL DEVELOPMENT

Instructor-led and online training opportunities are available to Florida State faculty and staff members. To view a schedule of classes and registration information, visit www.hr.fsu.edu/train. To register for classes, log in to www.omni.fsu.edu and click in sequence: "Human Resources 9.0," "Self Service," "Learning and Development," "Request Training Enrollment" and "Search by Date, Course Code or Course Name." From there, click on "View Available Sessions" and choose a session number. Follow the prompts to submit a request. To view a course description, click on the icon. **Information:** (850) 644-8724.

>>NEW EMPLOYEE ORIENTATION AVAILABLE ONLINE: Each participant must certify his or her completion of online NEO by faxing a completed copy of the "Certification of Completion and Evaluation of Orientation" form to the Office of Training and Organizational Development as indicated on the form. The link to online new-employee presentations, materials and the certification form can be found at www.hr.fsu.edu/Content/NEOnline/index.html. **Assistance:** (850) 644-8724.

>>ADULT BASIC EDUCATION: The objective of the program is to improve an individual's fundamental educational skills in reading, writing and/or math. The program also is a preparation for the General Educational Development (GED) test. ABE classes are taught by Florida-certified teachers. Participants choose and attend one regularly scheduled, three-hour class session every Tuesday or Thursday from 9 a.m. to noon at the Training Center, 493 Stadium Drive. **Registration** (for new and returning participants): (850) 644-8724. **Please note Policy OP-C-7-F1:** If an employee attends a training program (to include programs provided by Human Resources) during work hours and wishes to have the training considered as time worked, the employee must secure the permission of his or her immediate supervisor before attending. Otherwise, employees may attend training during their off hours, or they may use leave time if so desired.

BENEFITS OFFICE

>>INSURANCE CARDS: New insurance cards were recently mailed to employees who made changes to their benefits during the 2011 Open Enrollment period. Employees who have not received their insurance cards should contact their insurance provider. The insurance provider can reissue cards and also may provide temporary

cards from its website or via fax. Contact information for the provider companies is located on the HR website (www.hr.fsu.edu) under "Benefits for Faculty and Staff," and also on the MyBenefits website (www.myflorida.com/mybenefits/pdf/InsuranceCarrierContactInfoPage.pdf). In addition, all employees who have active health insurance coverage should have received a prescription plan card from **Medco**. To request a card, call **(877) 531-4793**. As always, employees are encouraged to keep their home addresses updated in OMNI Self Service.

>>DOUBLE DEDUCTIONS FOR BENEFITS: All nine- and 10-month faculty members and seasonal employees enrolled in state health, life and supplemental benefits will have double deductions taken from their paychecks beginning with the Feb. 10 paycheck. The deductions will end with the May 4 paycheck. These additional deductions are taken out to prepay premiums for the months of June, July, August and September. Regular deductions will resume on the first paycheck in September. Employees should review their paychecks during the double-deduction period to ensure that the deductions are correct. **Information:** (850) 644-4015 or insben@admin.fsu.edu.

>>RETIREMENT PLANNING SEMINAR: The Benefits Office will present this seminar on Wednesday, March 28, from 8:30 a.m. to 3:30 p.m. in the College of Medicine Auditorium. Because the seminar is a university-sponsored training program, attendance may be considered time worked with supervisory approval. **Information:** Leasa Howard, (850) 644-4016 or retirement@admin.fsu.edu.

>>ELECTIVE RETIREMENT CONTRIBUTION LIMITS FOR 2012: The Internal Revenue Service has announced cost-of-living adjustments for elective contributions to retirement accounts, including FSU-sponsored tax sheltered annuity plans [403(b)], post-tax Roth 403(b) and state of Florida-sponsored deferred compensation (457) plans. For the 2012 calendar year, the annual contribution limit for 403(b) plans will be set at \$17,000. The contribution limit for the 457 Deferred Compensation plan also will be set at \$17,000. At any point in the 2012 calendar year, employees who are age 50 and above are eligible to contribute an additional \$5,500 to a 403(b) and/or a 457 retirement plan. **Information:** Michael Horgan, (850) 644-4017 or retirement@admin.fsu.edu.

>>NEW-HIRE BENEFITS HELP SESSIONS: The Benefits Office will conduct bi-weekly help sessions for new employees. Sessions will be held Feb. 28, March 13 and March 27 from 9 to 10 a.m. in the Human Resources Training Room, A6244 University Center. All new employees are urged to view the online New Employee Orientation before attending the help sessions. **Information:** (850) 644-4015 or insben@admin.fsu.edu.

>>OPEN ENROLLMENT FOR GABOR LIFE INSURANCE: The Gabor Agency is offering a special open enrollment through March 30, 2012 for permanent life insurance on a guaranteed basis. Full-time employees can apply for coverage up to four times their salary, with a maximum of \$250,000. Policies may be continued after retirement or termination of employment, with no increase in premiums or reduction in coverage. **Information:** The Gabor Agency, (850) 894-9611, Ext. 6.

They're back!



“It’s Representative Brundle. He wants to know why we’re not hard at work in the classroom.”

When House Speaker Dean Cannon states that higher education in Florida is “racing toward mediocrity” (*Tallahassee Democrat*, January 2012)...

When Senator John Thrasher proposes legislation that would “prohibit state college and university employees and contractors from serving in the Florida Legislature” (WCTV, January 2012)...

When we are reminded that “Florida ponders need for faculty tenure” (*Sun-Sentinel*, February 2012)...

The need for a strong voice for faculty is clear! Join UFF-FSU

UFF dues are 1% of regular salary. *Please fill out the form below and return it to:*
Jack Fiorito, President, UFF-FSU Chapter, RBB 244, P.O. Box 3061110, Tallahassee 32306-1110

Membership Form, United Faculty of Florida FSU Chapter
Please print complete information

Last Name		First Name	MI	Department or Unit	
Home Street Address				Campus Address & Mail Code	
City	State	Zip Code	Office Phone		Home Phone
E-mail Address (Personal/Home)			E-mail Address (Office)		

Please enroll me immediately as a member of the United Faculty of Florida (FEA, NEA-AFT, AFL-CIO). I hereby authorize my employer to begin payroll deduction of United Faculty of Florida dues (1% of regular salary). This deduction authorization shall continue until revoked by me at any time upon 30 days written notice to FSU’s payroll office and to the United Faculty of Florida.

Signature (for payroll deduction authorization)
Visit the UFF-FSU Chapter Web site at www.uff-fsu.org

Today’s date
FSU Works Because We Do!

*Illustration reprinted from “He Looks Too Happy to Be An Assistant Professor: A Collection of Cartoons by Vivian Scott Hixson,” by permission of the University of Missouri Press. ©1996

>>**Retirement celebration:** The College of Social Work will host a reception in honor of program associate **Nancy Holaday** and her 38 years of dedicated service to the university. It will take place Friday, Feb. 24, at the University Center Club. **Information: L. Shuntel Fuller, (850) 645-9767.**

>>**Extreme-scale computing workshop:** A two-day workshop geared for Florida State faculty members, "Research Computing on Multicore and Many-Core Systems: Toward Extreme-Scale Computing," will take place March 9-10 at the Augustus B. Turnbull III Florida State Conference Center.

The workshop will introduce researchers to next-generation computing architectures and development environments for extreme-scale computing, as well as the **Sunshine State Education and Research Computing Alliance (SSERCA).**

The workshop is free. **Registration: www.sserca.org.**

>>**Bicycle ride to honor vets:** The **Florida State Veterans Center** will host **Honor Ride Tallahassee**, a bicycle ride to support injured veterans. The public event, which will take place Saturday, March 10, from 8 a.m. to approximately 11 a.m., will start and finish at the "Unconquered" statue at Doak Campbell Stadium on Champions Way. Bicyclists will be able to choose between a

15-mile and a 40-mile course. Honor Ride Tallahassee is part of Ride 2 Recovery, a national cycling program to benefit mental and physical rehabilitation programs for the nation's wounded veterans. **Registration: www.active.com** and type "Honor Ride Tallahassee" into the site's search engine. **Information: www.ride2recovery.com.**

>>**Call for research participants:** College of Social Work Assistant Professor **Eric Garland** is seeking participants for a study comparing the effectiveness of two forms of group treatment for individuals with chronic pain conditions who are being treated with prescription opioid painkillers — such as Oxycontin, Percoset, Vicodin and Lortab — that are prescribed by licensed medical staff.

One of the two treatments is a mindfulness skills group, which involves learning new ways of coping with pain, stress and medication-related problems. The other treatment is a support group, which involves group discussions related to chronic pain.

Employees with a chronic pain condition (or who know of someone with such a condition) who are being treated with prescription opioid painkillers are asked to call Garland at (850) 645-9571, or send an email to **fsu.chronic.pain@gmail.com**. Because FSU emails are considered to be in the public domain due to the Sunshine Law, Garland recommends that employees contact him through a non-FSU email account to protect personal privacy.

Those wishing to participate may leave a confidential message with a phone number and/or email address. Strict confidentiality will be maintained for all participants throughout the study. Participation in the study is completely voluntary.

Lovely New Homes!

Meandering Lane



at

WESTMINSTER OAKS

Exceptional Active Living Choices!

Call Sheri at 850-878-1136

Come for the Lifestyle. Stay for a Lifetime.™



WESTMINSTER COMMUNITIES OF FLORIDA
www.WestminsterRetirement.com

State

Florida State University
008 Westcott Building
Tallahassee, FL 32306-1430

CAMPUS
MAIL
DELIVERY